

RESIDENCIAL ALCALÁ Y ORTI ALCALÁ DE GUADAIRA (SEVILLA)

APARTAMENTO Nº 4 NIVEL Nº 1

SUPERFICIES APROXIMADAS APPROXIMATE SURFACE AREAS

01. SALON	(LIVING-ROOM)	15.88 m2
02. COCINA	(KITCHEN)	6.13 m2
03. CIRCULACION	(PASSAGE)	0.98 m2
04. DORMITORIO 1	(BEDROOM 1)	10.91 m2
05. DORMITORIO 2	(BEDROOM 2)	7.47 m2
06. BAÑO	(BATHROOM)	3.19 m2

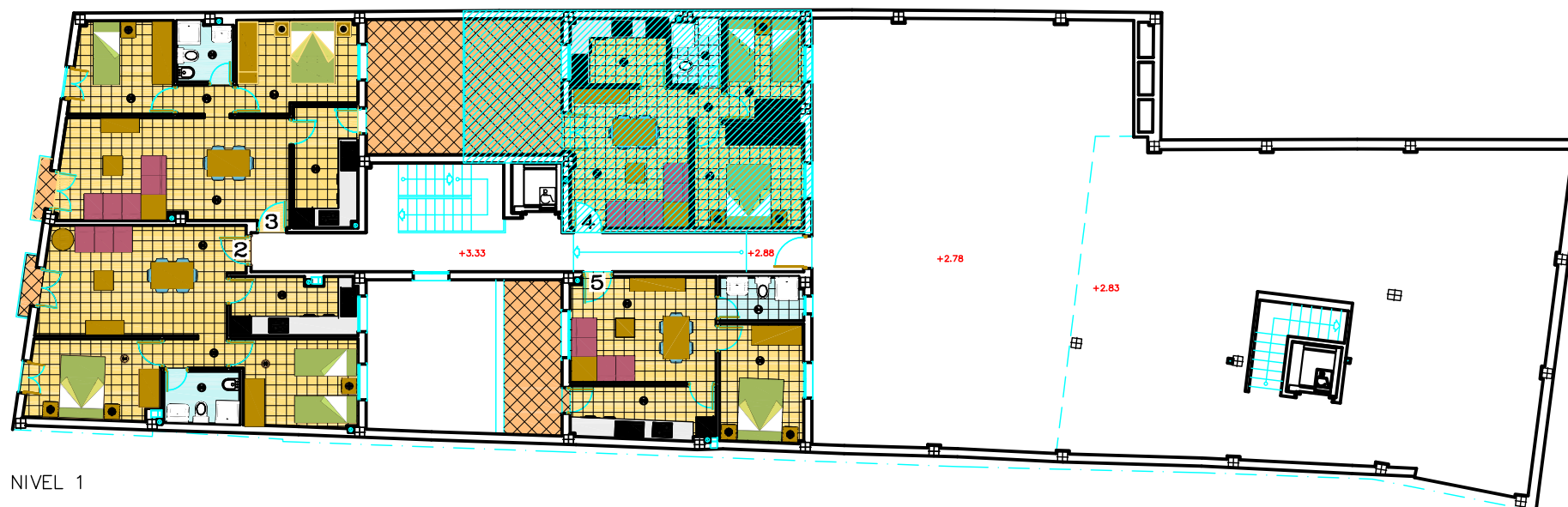
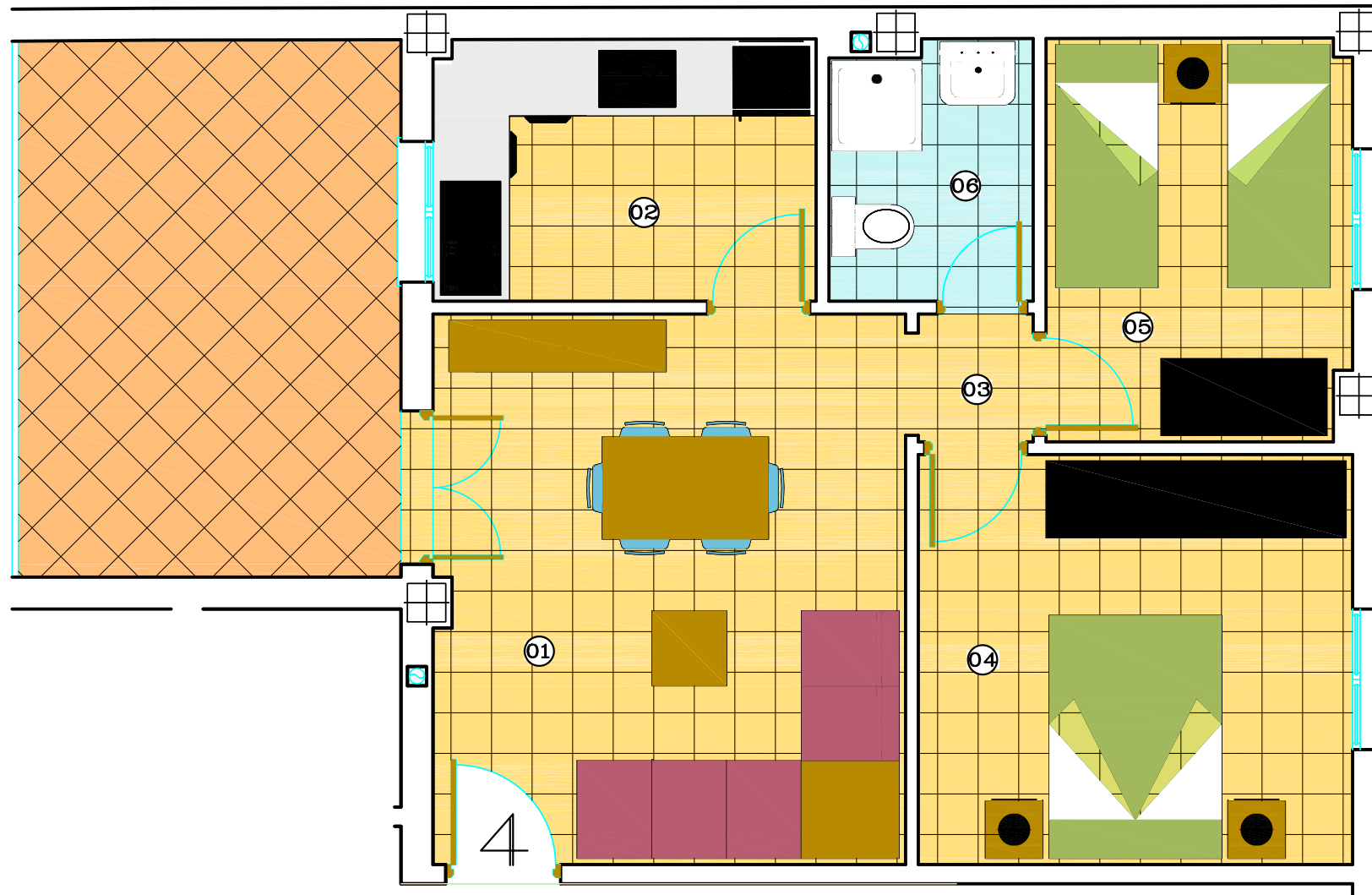
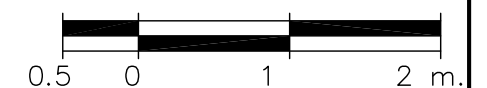
SUPERFICIES SURFACE AREAS

SUP.CONST.PROPIA	(ENCLOSED BUILT)	52.84 m2
SUP.CONST.ZONAS	(COMMUNITY BUILT)	22.51 m2
COMUNES	(TERRACE)	0.00 m2
TERRAZA	(GARDEN)	12.58 m2
PATIO	(SOLARIUM)	0.00 m2
SOLARIUM	(TOTAL)	87.93 m2
TOTAL		

ESTE PLANO PUEDE SUFRIR MODIFICACIONES, ES VÁLIDO ÚNICAMENTE A EFECTO INFORMATIVO Y NO TIENE CARÁTER CONTRACTUAL.

THIS PLAN MAY BE SUBJECT TO CHANGES AND IS VALID FOR INFORMATION PURPOSES ONLY, IT DOES NOT FORM PART OF A CONTRACT.

ESCALA GRÁFICA SCALE



NIVEL 1